

Excavators



**WACKER
NEUSON**
all it takes!



**ASK ABOUT
THE BEST
HEAVY INDUSTRY
WARRANTY
5 YEARS**



True size matters the tighter the construction site is: The excavators from Wacker Neuson.

1. Uncompromising economic efficiency.

Our finely tiered excavator product range offers the ideal machine for your individual needs. All Wacker Neuson excavators are particularly robust, powerful and easy to operate. A variety of attachments increases your application areas and makes the machines even more economical.

2. “Made in Austria” reliability.

All professional disciplines are combined in our plant in Hörsching near Linz: Research and development, procurement, product management, prototype construction, design, quality assurance and production. That’s how we achieve the highest quality – made in Austria.

3. Your success in focus.

Our cooperation first begins as soon as you have chosen an excavator from Wacker Neuson. You have access to numerous services and service packages, because we want to ensure maximum machine availability for you. That is our promise to you!

Wacker Neuson – all it takes!

We offer products and services rendered that meet your high requirements and diverse applications. Wacker Neuson stands for reliability. This of course also applies to our extensive product range of excavators. We do our best every day to ensure your success. And we do this full of passion for our jobs.

Excavator expertise down to the last detail.



Efficiency

- **Vertical Digging System (VDS):** More productivity on every unevenness
- **Telescopic travel gear:** Narrow for tight passages, wide for high stability
- **Lifting lugs on the cabin roof** for easy displacement or loading
- **Zero Tail:** Minimized rear projection
- **Compact dimensions** for a quick change in the application location



Versatility

- **Control circuits (AUX I–V):** Up to 5 auxiliary control circuits ex work
- **High machine utilization** due to numerous attachments ex work
- **Customer colors:** If desired, we also paint in special colors
- **Innovative front windshield system** for optimal ventilation in any weather



Maintenance











- **Optimal service accesses** save time and money during maintenance
- **Long service life** thanks to the high-quality components and processes



Safety

- **Intuitive operation**, e.g. via joystick
- **Ergonomic cabin:** with many setting options
- **Very good view** of the work area
- **Telematics solution EquipCare** for ideal overview
- **Active Working Signal** for greater safety

Overview of all excavators

	 803	 EZ17	 ET18	 EZ26	 EZ36	 ET42	 EZ50	 ET58
Shipping weight:	930–992 kg > Page 08	1,595–1,822 kg > Page 18	1,582–2,060 kg > Page 20	2,469–3,161 kg > Page 26	3,507–4,452 kg > Page 30	3,817–4,609 kg > Page 38	4,617–5,454 kg > Page 38	4,817–5,630 kg > Page 38
	 EZ80	 ET90						
Shipping weight:	7,588–8,877 kg > Page 34	8,348–9,625 kg > Page 34						

5 year / 5,000 hour warranty – see Warranty Terms at au-warranty.wackerneuson.com



The highest engine output in its class: Low-consumption 3-cylinder engine and standard auxiliary hydraulics, ideal for breaker operations

Dual power for emission-free working: Simply connect the electro- hydraulic power unit and continue to work with the same performance

Fold-over ROPS bar and telescopic travel gear for optimal access to particularly tight construction sites

Smallest model - also works in zero emission mode:
The mini-excavator 803.

	803
Shipping weight (kg)	930-992
Digging depth with short dipper stick (mm)	1,763
Engine output (kW)	9.9

Hydraulic oil tank on the outside, due to which the oil heats up less without an additional cooler – for full performance at high ambient temperatures

Lift arm cylinder on the top side of the boom, protected against damage



Very sturdy due to the cast-iron elements

2-circuit auxiliary hydraulics (optional) for more flexibility in use, such as for breaker or swivel bucket applications

The fold-over dozer blade extension always remains connected to the unit and never gets lost

dualpower (optional) connection option for a power unit for emission-free work



As wide and tall as you need.

The width can be adapted as necessary with the hydraulic telescopic travel gear and the fold-over dozer blade extension: from 700 mm for tight passages to 860 mm for a high level of stability. In the process, the elements for the dozer blade extension always remain connected to the unit. If you need to drive through a door, the ROPS bar can also be folded down.

Expand your possibilities.

In addition to the existing diesel engine, the tracked excavators can be operated emission-free via an electro-hydraulic power unit. This is ideal, for example, in enclosed spaces or in urban areas. To bring the unit to the job site, simply attach it to the dozer blade of the excavator.



ROPS bar with shatter protection (optional) for a high level of safety during breaker applications.



Easy service thanks to the wide-opening engine hood and easily interchangeable wear parts.



Powerful diesel engine and optimally matched hydraulics (LUDV) ensure excellent digging power and sensitive control

Up to 4 auxiliary control circuits for maximum flexibility and time savings

Lifting points on the roof for easy displacement

Compact, powerful, maneuverable: The Zero Tail mini-excavator EZ17.

	EZ17
Shipping weight (kg)	1,595 – 1,822
Digging depth with short and long dipper stick (mm)	2,326 – 2,486
Engine output (kW)	13.8

High thermal resistance:
no losses in performance,
even at high temperatures

**Optimally protected neck and
lifting arm cylinder** on the top
side of the boom

**Load-holding function
and optional overload
valves** with hose burst
protection

**Simple disassembly
of the canopy** for low
clearances and optimal
maintenance access

100% Zero Tail:
no rear projection,
ideal for work directly
against walls and
boundaries



**Up to 4 auxiliary
control circuits** for easy
operation of attachments
such as swivel buckets
or breakers – optionally
with preparation for the
hydraulic quick hitch
system

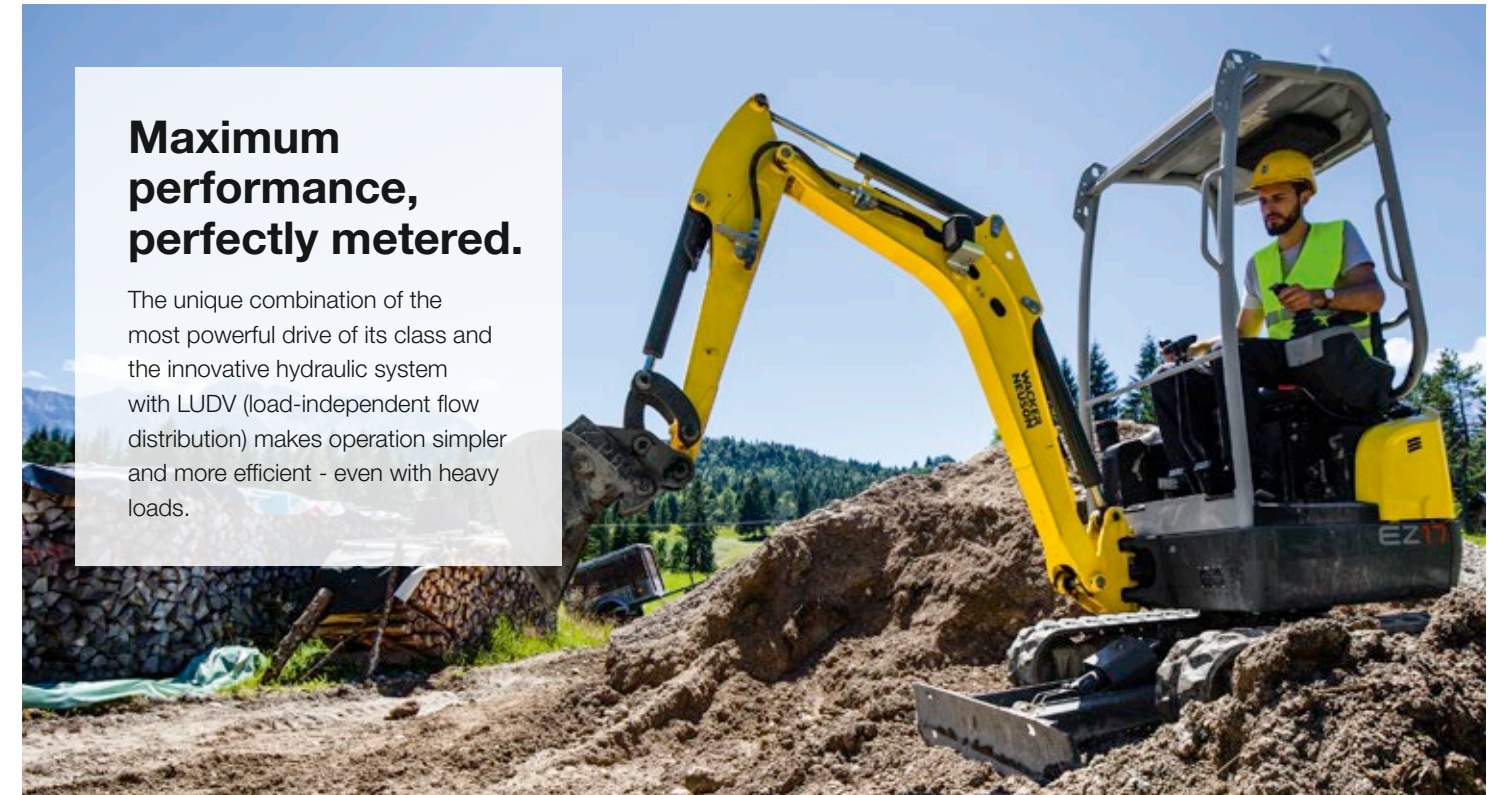
The best stability compared
to other zero tail excavators
due to an ideal machine center
of gravity

Solid steel construction,
interchangeable steel bushings for
durable, play-free bearing points

Optimal maneuverability in tight spaces
due to the telescopic travel gear
990 - 1,300 mm, dozer blade extension

Maximum performance, perfectly metered.

The unique combination of the
most powerful drive of its class and
the innovative hydraulic system
with LUDV (load-independent flow
distribution) makes operation simpler
and more efficient - even with heavy
loads.



Ease of servicing taken “further.”

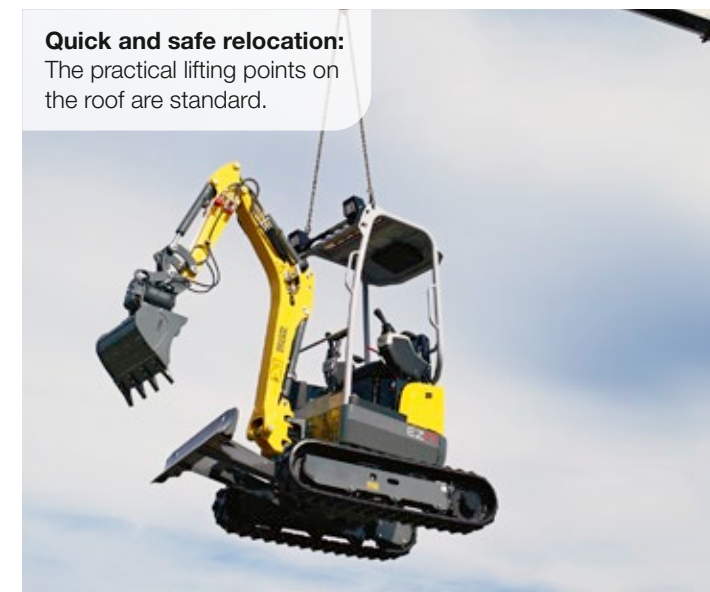
Covers that can be removed with just a screwdriver make
maintenance work easy, quick and favorably priced.

A further plus at maintenance is the extra-large
engine hood. The cleaning of the radiator is also easy,
because it is made entirely of aluminum and is therefore
extremely sturdy.



Quick and safe relocation:

The practical lifting points on
the roof are standard.



Canopy with skylight:

For a perfect view of the work area.



The ET18 impresses with the best overall performance in its class

More productivity and efficiency with the Vertical Digging System (VDS) enabling precise vertical digging even on sloping ground. It enables a 25% saving on materials and time

Spacious, flexible and comfortable canopy or cabin concept with optimum all-round visibility

Three powerful models: The tracked excavator ET18.

	ET18
Shipping weight (kg)	1,582–2,060
Digging depth with short and long dipper stick (mm)	2,202–2,402
Engine output (kW)	13.8



2 lifting lugs to easily move the entire machine



Skylight for an optimal view upwards

High thermal resistance
allows for full load work during ambient temperatures up to 45 degrees Celsius

Easily disassemble the cabin or canopy, for example for low clearance heights

Work fatigue-free through the individual adjustment of the seat, joystick position and armrests

Comfortable **cabin** available as an option

Overload valves with hose burst protection for more safety during lifting (optional)

Hydraulically pilot-operated gas pedals for comfortable and precise control without mechanical wear – hands remain free for other functions

Simple attachment change from the cabin - preparation for hydraulic quick hitch system

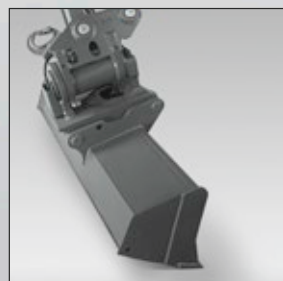
Powerful diesel engine – optimal efficiency and performance, up to 30% higher forces

Up to 4 auxiliary control circuits available ex work

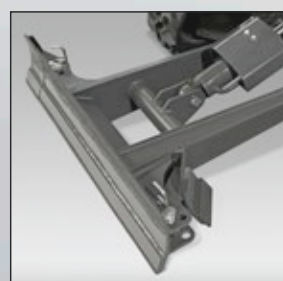
Sturdy aluminum radiator lasts for a long time and is easy to clean

Laterally raised cast bumper reduces damage to the rear

VDS – infinitely variable superstructure tipping

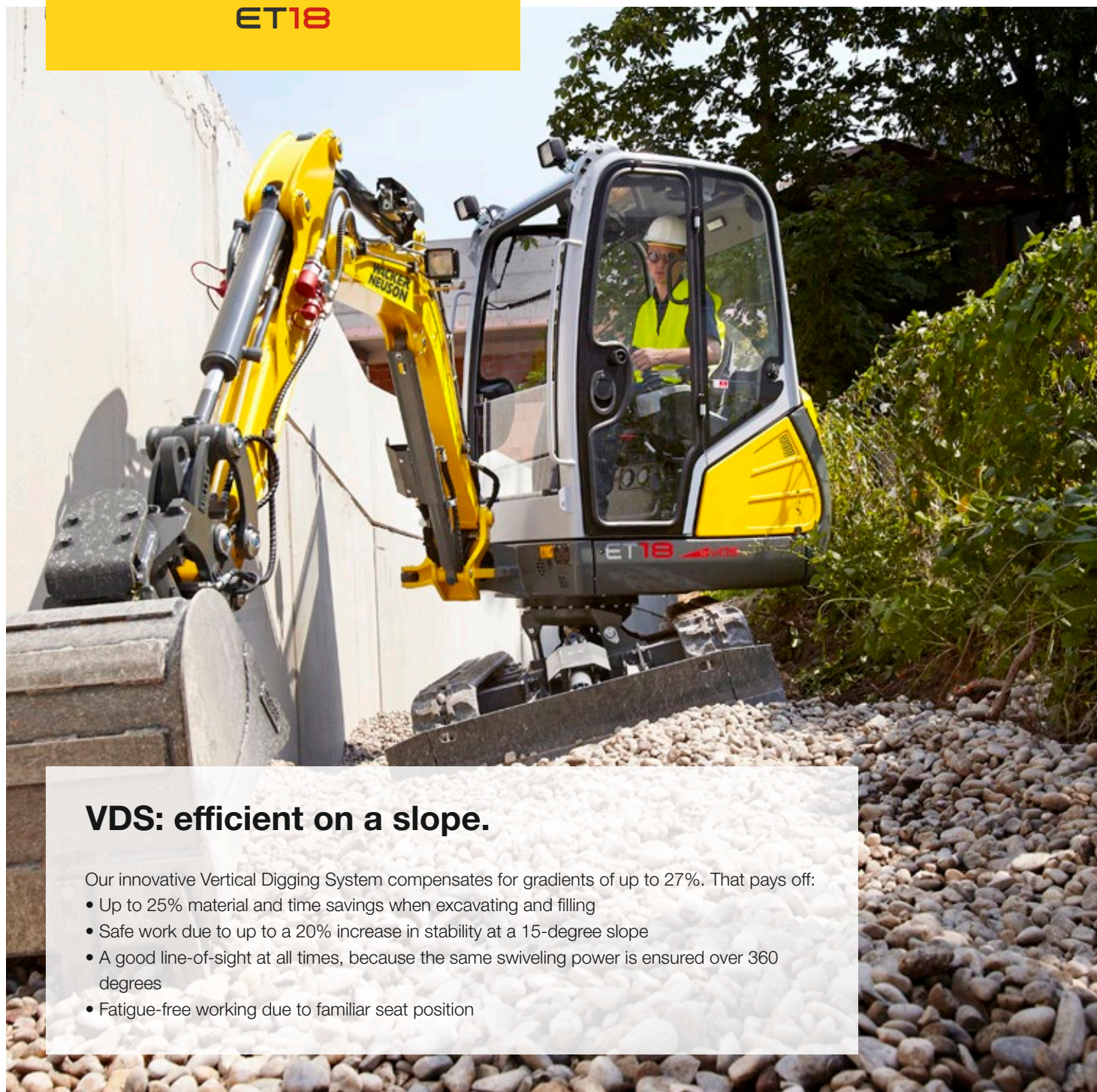


Standard auxiliary hydraulics for simple operation of different attachments



Flexible with little space and at the same time stable: Telescopic travel gear 990 - 1,300 mm with additional stabilizers and fold-over dozer blade extension

Easy and quick transport with a car trailer



VDS: efficient on a slope.

Our innovative Vertical Digging System compensates for gradients of up to 27%. That pays off:

- Up to 25% material and time savings when excavating and filling
- Safe work due to up to a 20% increase in stability at a 15-degree slope
- A good line-of-sight at all times, because the same swiveling power is ensured over 360 degrees
- Fatigue-free working due to familiar seat position

Sophisticated solutions for quick maintenance.

- ✓ Tipping seat console
- ✓ Wide opening engine hood
- ✓ Laterally removable covers
- ✓ Optimally positioned zerk fittings
- ✓ High time and money savings

Innovative windshield system.

The two-part front window allows for optimal ventilation in the cabin in any weather. In addition, it makes it easier to communicate with the operator. A separate removal and storage of the window is a thing of the past.



Closed front window - two glass windows keep water and wind out.



The upper front window can be pushed under the cabin roof. The lower pane serves as splash protection.



The lower windshield slides behind the upper window, making it ideal for talking with colleagues.



If necessary, both windows are pushed below the cabin roof where they are stored safely.

The ergonomically optimized comfort cabin offers a very good all-round visibility, plenty of legroom and headroom and a wide entry.



Individuality through variety.

Configure your perfect working unit and select, for example:

- Up to 4 auxiliary control units
- Long dozer blade
- Automatic RPM speed control
- 2nd cab door
- Overload warning device
- Proportional control of the auxiliary hydraulics with flow rate regulation (Potti)

Hydraulically pilot controlled gas pedals make it possible to conveniently and precisely control without mechanical wear. Your hands remain free for other functions.





LED lights ensure optimal visibility even in night times

Canopy and cabin can be easily removed for easy access. Adjustable operating and display elements ensure user friendly operation

Quick, easy cost-saving maintenance access due to the large lateral engine hood and removable covers

Comfortable working conditions:
The Zero Tail excavator EZ26.

	EZ26
Shipping weight (kg)	2,469–3,161
Digging depth with short and long dipper stick (mm)	2,544–2,744
Engine output (kW)	15.8



Sensitive operation and exact work using hydraulic pilot controlled pedals

Sturdy, time-tested and proven design

ensures a long service life and high resale value

Up to 4 additional control circuits are optional

Simple disassembly of the cabin for low clearances and an optimal maintenance access

100% Zero Tail: no overhang



Sturdy aluminum radiator lasts for a long time and is easy to clean

Simple attachment change - preparation for hydraulic quick hitch system (optional)

Optional additional rear weight for higher stability and lift capacity

Compact dimensions: Ideal for tight conditions and transport on a passenger car trailer

High thermal resistance up to 45 degrees Celsius for 100% performance even at high ambient temperatures and a long service life

The slanted travel gear box prevents dirt accumulation and is easy to clean

The innovative **two-part front windshield mechanism** allows for various opening positions – for the greatest possible comfort and safety in any working situation.



Sophisticated solutions for quick and low-cost maintenance.

- ✓ Ideally reachable: Hydraulic and engine oil filter, air filter, water trap and tank filler point
- ✓ Easy to remove: Canopy or cabin
- ✓ Easy to replace: Bushings on stressed bearing points
- ✓ Top maintenance access: The largest engine hood in its class

Transport pro:

- Less than 2.7 t shipping weight
- Can be transported on a car trailer
- Gain in range and additional fields of application
- Great cost savings

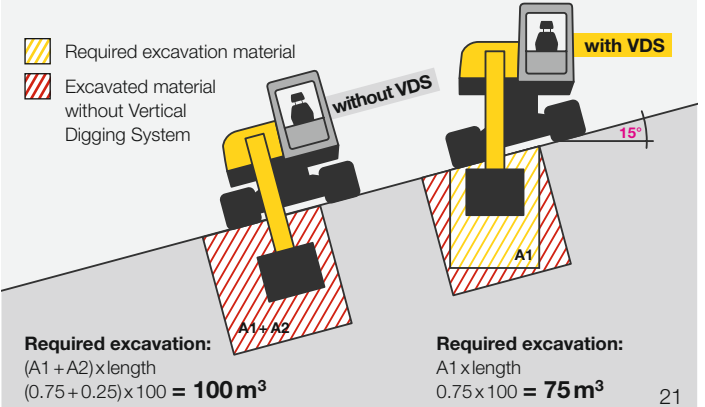


Work ergonomically with any body size thanks to an individually adjustable seat, joystick and armrest position, plenty of headroom and legroom and the best all-round visibility.



Reduce the excavated volume through vertical digging with VDS.

- Required excavation material
- Excavated material without Vertical Digging System



Sophisticated drive concept
for quick, precise control and
shorter work cycles

High level of customization ex
work due to numerous options,
such as an hydraulic thumb, up
to 4 auxiliary control circuits, and
much more

Get in and start working:
Intuitive operation of all
excavator functions via joystick,
display, Jog Dial and keypad

Trimmed for productivity: The tracked excavator EZ36.

EZ36	
Shipping weight (kg)	3,530 – 4,446
Digging depth with short and long dipper stick (mm)	3,247 – 3,497
Engine output – POWER mode (kW)	18.2



EZ36

Maximum efficiency.

Our excavator of the 3.5-ton class impresses with many sophisticated detailed solutions, which increase productivity – from the intuitive operation to the quick maintenance. And the performance is also convincing, because an optimized engine-pump management ensures up to 15% faster working cycles. The Zero Tail excavator EZ36 is the ideal choice for frequently confined spaces, such as in horticulture and landscape construction, in urban areas or road construction. It offers a particularly high level of stability, ideal for heavy loads, in small spaces.

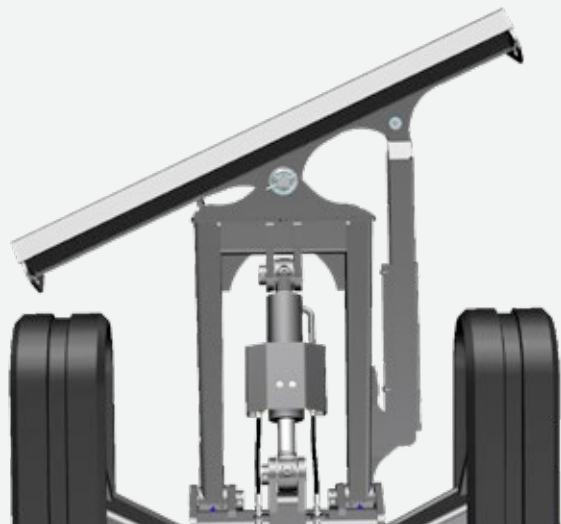
Work comfortably: Large comfort cab with side sliding window and individual adjustment of the seat, armrests and joystick for ergonomic fatigue-free working.

Two low-consumption engine versions
Class IIIA, Tier IVi/Tier IV final version – neither requires any exhaust gas after-treatment.

Attachment for all applications: a various number of attachments is available.

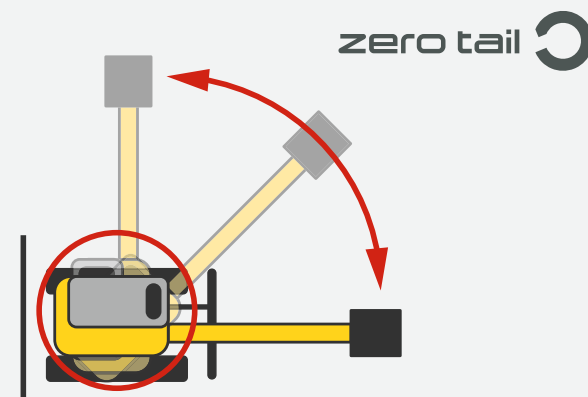
Infinitely variable angle dozer blade

with floating position for more flexibility and efficiency.



When things get tight: EZ36.

Swivel without danger, even in the tightest of spaces or directly next to a wall - it's no problem with the zero tail overhang excavator EZ36.

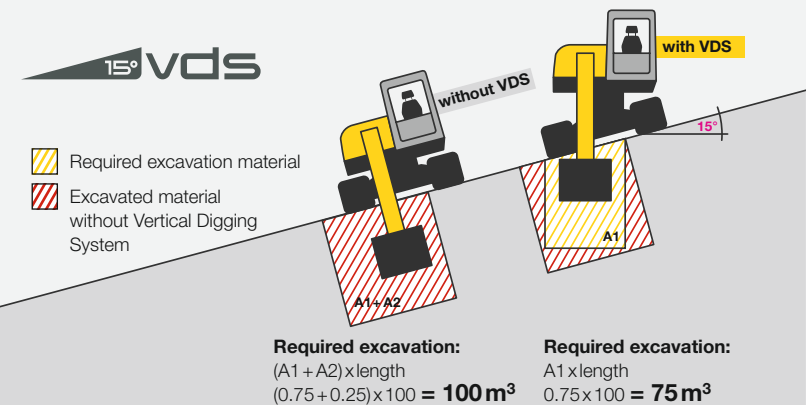


Many individual options – all available ex work:

- ✓ Powerful air-conditioning system
- ✓ Up to 4 additional control circuits
- ✓ Angel dozer blade
- ✓ Telematics
- ✓ Additional counter weight
- ✓ Rubber or steel tracks

Infinitely variable superstructure tipping VDS.

The unique vertical digging system (optionally available) compensates for slopes of up to 27 percent, making it possible to vertically excavate on a slope. This is not only ergonomic for the driver, but it also saves time and excavated material.



Very good performance due to high stability, high lift capacity and digging power as well as quick working cycles

Comfortable and fatigue-free joystick control thanks to Load Sensing Flow Sharing

Extremely productive working thanks to 3-point kinematics and bucket rotation angle expanded to 200 degrees

Excavating made easy:
The excavators ET42, EZ50 and ET58.

	ET42	EZ50	ET58
Shipping weight (kg)	3,817–4,609	4,617–5,454	4,817–5,630
Digging depth with short and long dipper stick (mm)	3,344–3,544	3,467–3,667	3,767–4,017
Engine output (kW/hp)	36/48.2	36/48.2	36/48.2

Optional: AUX pressure release:
Makes changing hydraulic attachments easier. Tools can also be coupled with the engine running

Optional **available with Vertical Digging System** (ET42 available, ET58 coming soon) for increased efficiency and productivity.

Intuitive operation via joystick, display, Jog Dial and keypad

Exhaust system pointed upward increases safety for persons, reduces potential damage to objects and swirls up less dust, e.g. In trench construction



Active Working Signal (AWS) signals to persons standing in the area that the excavator is in operation

Emission standard Stage V: For minimal pollutant emissions

Zero Tail: no rear projection, for work directly alongside house walls and boundaries (EZ50)

Innovative front windshield system allows optimum ventilation of the cabin as well as easy communication with co-workers

High level of cabin comfort with very good ergonomics and climate control performance

Load Sensing Flow Sharing allows precise control regardless of the load to be moved

Piston rod protection made of plastic for lifting arm cylinders (standard) and for bucket – and for dipper stick cylinders (optional)



Bucket linkage up to 200 degree movement for stronger break out forces

Up to six auxiliary control circuits (optional)

The best illumination and long lifetimes with LED headlights (work lights optional)

Bluetooth hands-free system (optional) and USB charging function for more comfort and safety

The windshield wipers and their wiping direction are aligned so that no visibility restrictions are created for the operator

10 large tie-down lugs ensure quick and easy lashing down, thus ensuring safe transport of the machine

Angle dozer blade with floating position for more efficient working



Always stay vertical: The Vertical Digging System for the ET42 and ET58.

Both the excavators ET42 and ET58 (coming soon) score points as standard with a big portion of innovation and operator-friendliness. With the Vertical Digging System (VDS) option, efficiency and productivity can be increased even more at the touch of a button.

For both these excavators, VDS means:

- 25% savings on materials and time when excavating and backfilling material
- Machine and entry height, as well as insertion depth, as on the models without VDS
- Full 360-degree swing power
- Fatigue-free working due to upright seat position



Due to Load Sensing Flow Sharing system more precise work results can be achieved.

Load Sensing Flow Sharing allows precise control regardless of the load to be moved. The machine adjusts to the load, and the joystick movements are always kept the same for the operator.

Versatile performer.

With up to six auxiliary control circuits and numerous new and time-tested and proven options, ET42, EZ50 and ET58 can be ideally adapted to individual requirements. Changing attachments is quick and comfortable – among other things, by a pressure release switch in the cabin and quick hitch system (optional).



More cabin comfort.

The intuitive operating concept makes it possible to fully control the excavator via joystick, 3.5-inch display, Jog Dial and keypad. This way, for example, attachments can be stored, auxiliary hydraulics controlled and oil levels set.

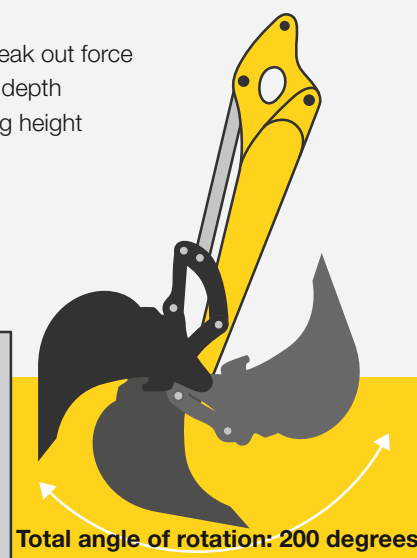
The powerful air-conditioning system, with outflow jets ideally placed, ensure pleasant and fatigue-free work. It can perform a cool-down of up to 16 degrees Celsius (at an ambient temperature of 38 degrees Celsius) – and in half the ISO standard time specified.



3-point kinematics for more performance.

An additional bolt in the rod linkage ensures a higher bucket rotation angle. Due to this, not only the torque but the range increases as well. This way, the excavator does not have to be turned as often. In numbers:

- Up to 20% higher break out force
- 5% greater insertion depth
- 10% greater dumping height



Active Working Signal for greater safety.

Thanks to the Active Working Signal (AWS) attached to the engine hood, co-workers on the construction site recognize whether the excavator is in operation. The AWS lights up red when the joystick mount is pressed down and the excavator is ready for use.



Piston rod protection made of plastic does not become deformed and prevents damage (available for bucket and dipper stick cylinders).



10 large tie-downs for easy and quick lashing down and secure transport.



Two compact excavator models which stand for power and efficiency. The EZ80 and ET90 ensure best work results

The EZ80 combines compact dimensions with excellent digging power – for best performances in a small space

The ET90 impresses with excellent engine and hydraulic performance - concentrated power that remains perfectly under control thanks to the load-sensing system

Power and efficiency times two:
the tracked excavators, EZ80 and ET90.

	EZ80	ET90
Shipping weight (kg)	7,588–8,877	8,348–9,625
Digging depth with short and long dipper stick (mm)	3,919–4,169	4,379*–4,679*
Engine output (kW)	42	55.4

* with articulated boom

Diesel particulate filter
to meet country-specific
statutory emission regulations

Efficient drive system
for high performance

Low tank filler point for easier
refueling without climbing

Compact and maneuverable due to
intelligent arrangement of
the components and low
height of machine

High stability due to a
low center of gravity and
optional additional rear
counterweight

**Optimal maintenance
access** for quick favorably
priced service

Large and sturdy aluminum radiator
easy to clean and with the best
cooling performance in its class

100% power up to 45°C
ambient temperature

Comfort cabin that can be
adjusted to any operator size

8 large tie-downs
for safe transport

Depending on the model, **different
track versions** to choose from

**Two operating modes to
choose from:** full power
(POWER) or save fuel (ECO)

Up to 7 headlights
for the optimal illumination of the
work area (optionally also LEDs)

Short hydraulic hoses for less
power loss and a long service life

Versatile in use due to up to
5 additional control circuits ex work

**Precise control with any
load** thanks to load-sensing
hydraulic system with LUDV

3-point kinematics
increases the insertion depth
and digging power

Articulated boom for bigger
digging radius and less repositioning
(optional with ET90)





Our two economic miracles.

Strong performance: Both excavators consume up to 20% less fuel than comparable models. Nevertheless, they are best in their class within the range of digging power and break out force. We promised you a miracle.

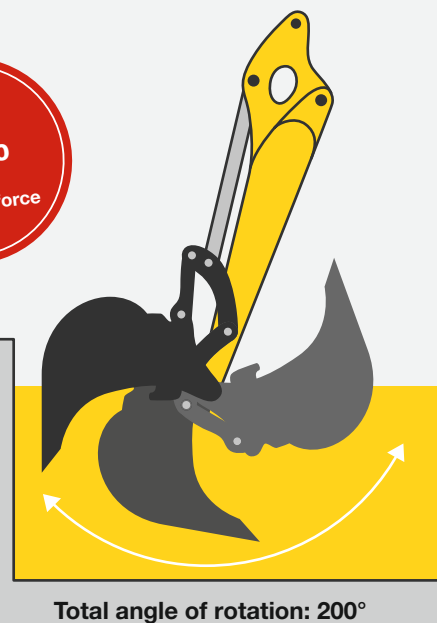
Unique 3-point kinematics.

The higher torque or the 3-point kinematics as well as the 200°-expanded angle of rotation make the ET90 the best in their class in terms of digging power.

- Optimal insertion angle rotation of the bucket
- Digs even deeper vertically
- More powerful excavating
- Improved dumping behavior and less material loss

Up to
20%
more
break out force

Vertical
insertion depth:
+ 5%



Total angle of rotation: 200°

More leeway thanks to articulated boom.

The articulated boom provides you with more maneuverability and therefore greater freedom of action. Because the additional joint permits the bucket to be pulled right up to the travel gear or the dozer blade. Ideal when narrow spaces need to be overcome or an obstacle has to be moved out of the way. The articulated boom is optionally available with the ET90 - unique in these classes!



Available with
a short and long
dipper stick!

■ Monobloc boom
■ Articulated boom

High fuel savings
due to the efficient hydraulics with LUDV
(load-independent flow distribution).

Your benefits:

Up to
+30%
Productivity



Up to
20% less
consumption

Articulated boom, optional for ET90, improves
range, digging depth and dumping height.





Default settings at the touch of a push button:
With jog dial, e.g. save and access liter quantity or saving/retrieving release for attachments.

Ventilate flexibly and communicate easily –
thanks to the innovative windshield system without removing the panes.



More cabin comfort.

Maximum operating comfort is standard with the EZ80 and ET90. In addition, we offer you numerous options to adjust your excavator to your individual requirements.

Two-part windshield that can be completely slid under the cabin roof (standard equipment)

LED headlights for even better illumination

Front sun blind standard

Optimal visibility due to the offset arm position

Fully lined cabin interior with a variety of storage compartments

Powerful air-conditioning system for a pleasant working temperature at all times

Large skylight for the best view even upwards

Rear-view camera with 7" multifunctional display for an ideal view to the rear

Lateral sliding window

Comfortable and intuitive joystick operation concept: with all important functions on both joysticks

User-friendly jog dial with individually savable settings (standard equipment)

Very low noise levels in the closed cabin

Air-cushioned comfort seat including seat heating for increased operator comfort and height adjustment





The EZ80 with minimal rear projection makes safe and precise working possible directly against walls.



Safe entry and exit thanks to the low entry height.

Reduced dimensions.

Whether during transportation or in tight spaces: Thanks to their compact design, the EZ80 and the ET90 can easily be taken to your next job site. And on the construction site, the machines can maneuver anywhere — even in confined spaces. You can benefit from high efficiency in all applications.

- Very low entry height
- Reduced dimensions due to the intelligent component arrangement
- Higher level of stability due to the low center of gravity

Simple maintenance. Simple repair.

The high productivity of our machines is not just due to the sturdy technology. Most service work can be completed in a short time due to quick and easily accessible maintenance points. Professional maintenance and repairs done by our technicians and original spare parts by Wacker Neuson also extend the service life of your machines.



Low emissions, high level of sustainability.

In terms of environmental friendliness, sustainability and low emissions, you are perfectly positioned with our compact excavators – even in the future. All machines meet the emissions directives for the reduction of exhaust emission pollutants without you having to make compromises when it comes to performance, long service life or economic efficiency. In order to achieve this, we only install the latest engine technologies that are equipped with various exhaust emission aftertreatment systems.

Dimensions

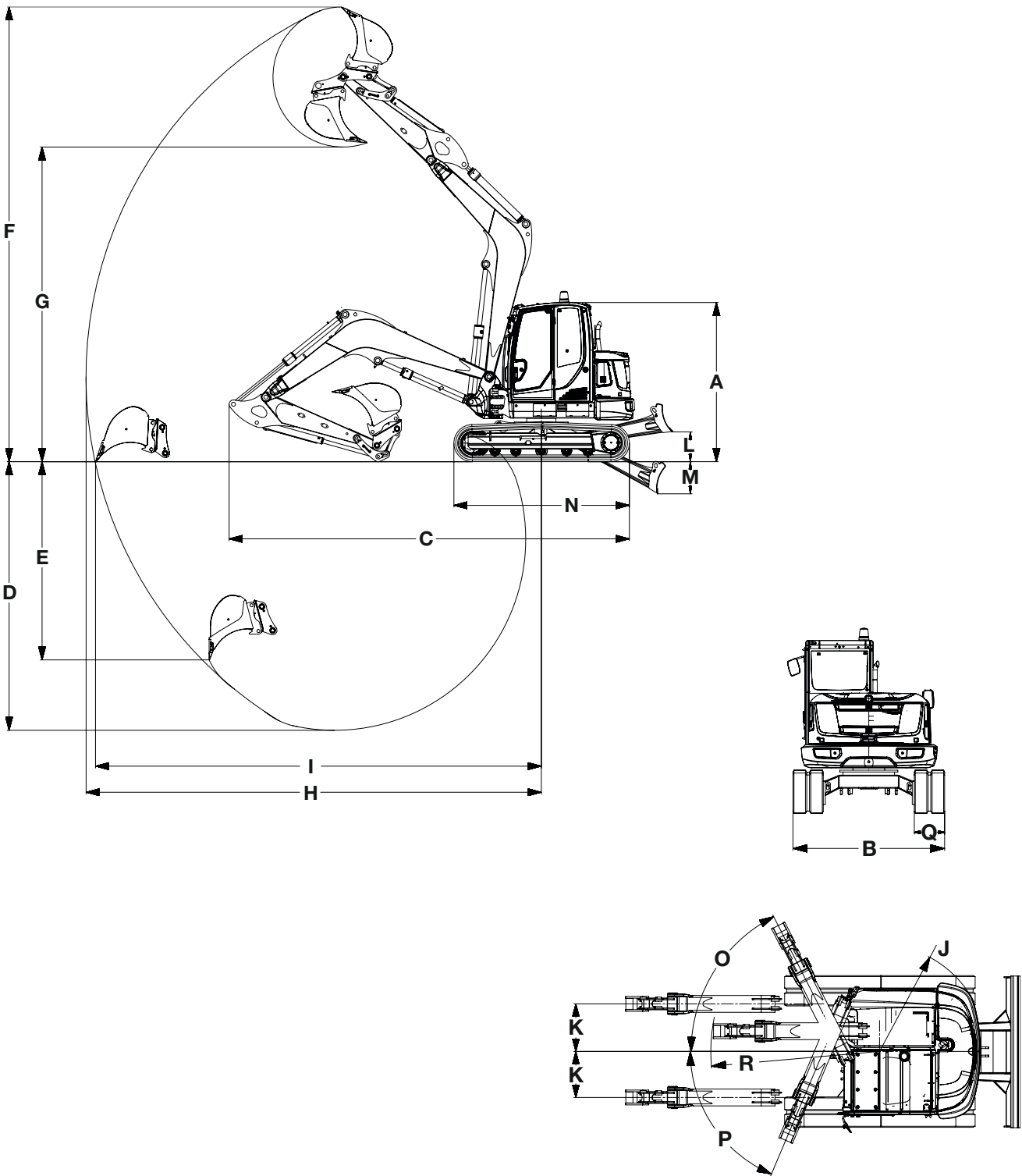
MINI-EXCAVATOR

			EO3/ EO3 dualpower	EZ17	ET18	EZ26	EZ36	ET42	EZ50	ET58	EZ60	ET90
DIMENSIONS		UNIT										
A	Height	mm	1,436 ⁽⁷⁾ , 2,261 ⁽⁶⁾	2,362	2,285	2,414	2,491/ 2,573*	2,494	2,555	2,550	2,562	2,562
B	Width of travel gear, retracted (track / tires)	mm	700, 860 ⁽⁶⁾	990, 1,300 ⁽⁵⁾	990, 1,300 ⁽⁶⁾	1,570	1,750	1,750	1,960	1,960	2,250	2,250
C	Transport length (short dipper stick)	mm	2,747	3,584	3,854	4,266	5,503/ 5,489*	5,146	5,467	5,455	6,939	7,117 6,468 ⁽³⁾
C	Transport length (long dipper stick)	mm	–	3,551	N/A	4,272	5,503/ 5,489*	5,152	5,482	5,446	6,944	7,139 6,690 ⁽³⁾
D	Max. digging depth (short dipper stick)	mm	1,763	2,326	2,202	2,544	3,247/ 3,172*	3,344	3,467	3,767	3,919	4,325 4,379 ⁽³⁾
D	Max. digging depth (long dipper stick)	mm	–	2,486	2,402	2,744	3,497/ 3,422*	3,544	3,667	4,017	4,169	4,625 4,679 ⁽³⁾
E	Max. vertical insertion depth (short dipper stick)	mm	1,320	1,713	1,415	1,962	2,123	2,114	2,085	2,708	1,915	3,192 3,198 ⁽³⁾
E	Max. vertical insertion depth (long dipper stick)	mm	–	1,863	1,600	2,152	2,360	2,293	2,262	2,945	2,124	3,474 3,456 ⁽³⁾
F	Max. insertion height (short dipper stick)	mm	2,863	3,462	3,553 ⁽⁴⁾	4,300 ⁽⁴⁾	4,925	5,210	5,470	5,749	6,620	7,322 7,931 ⁽³⁾
F	Max. insertion height (long dipper stick)	mm	–	3,576	3,663 ⁽⁴⁾	4,430 ⁽⁴⁾	5,082	5,340	5,599	5,910	6,782	7,529 8,196 ⁽³⁾
G	Max. dumping height (short dipper stick)	mm	2,012	2,436	2,510	2,840	3,336/ 3,411*	3,573	3,655	3,834	4,587	5,066 5,674 ⁽³⁾
G	Max. dumping height (long dipper stick)	mm	–	2,550	2,621	2,970	3,489/ 3,564*	3,703	3,784	3,995	4,749	5,272 5,940 ⁽³⁾
H	Max. digging radius (short dipper stick)	mm	3,090	3,899	3,802	4,613	5,298	5,489	5,916	6,039	6,955	7,331 7,596 ⁽³⁾
H	Max. digging radius (long dipper stick)	mm	–	4,050	3,989	4,805	5,582	5,678	6,150	6,277	7,190	7,620 7,889 ⁽³⁾
I	Max. reach at ground level (short dipper stick)	mm	3,028	3,848	3,700	4,481	5,391	5,376	5,794	5,920	6,795	7,179 7,463 ⁽³⁾
I	Max. reach at ground level (long dipper stick)	mm	–	4,002	3,894	4,681	5,641	5,570	5,988	6,164	7,036	7,474 7,751 ⁽³⁾
J	Min. tail swing radius	mm	747	660	1,169	759	933	1,335	1,047	1,312	1,228	1,583
K	Max. boom offset to center of bucket (right/left)	mm	245/ 283	533/ 418	516/ 359	764/ 533	680/ 650	493/ 532	764/ 770	551/ 583	705/ 683	705/ 683
L	Max. stacking height of the dozer blade above subgrade (short/long)	mm	197	271	198/ 281	380	393	418	410	414	474	479
M	Max. scraping depth of the dozer blade above subgrade (short/long)	mm	264	390	316/ 381	419	505	563	443	439	523	518
N	Total track length	mm	1,220	1,607	1,462	2,006	2,062	2,198	2,508	2,509	2,826	2,826
O	Max. swing angle of arm system to the right	Degrees	56	57	48	50	45	55	55	55	63	63
P	Max. swing angle of arm system to the left	Degrees	55	65	77	75	70	70	70	70	67	67
Q	Track/tire width	mm	180	230	230	300	300	350	400	400	450	450
R	Boom swing radius, center	mm	1,085	1,627	1,584	2,080	2,245	2,175	2,505	2,409	2,869	2,503 2,840 ⁽³⁾

⁽¹⁾ with articulated boom ⁽²⁾ with hybrid track ⁽³⁾ with steel track ⁽⁴⁾ with VDS ⁽⁵⁾ with telescopic travel gear ⁽⁶⁾ with roll-over protective structure
⁽⁷⁾ without roll-over protective structure * machine equipped with the VDS option

* Dimensions may vary depending on configuration

Tracked excavators



Technical data

MINI-EXCAVATOR	EZ17e803803 dualpowerET16EZ17ET18EZ26EZ36ET42EZ50ET58EZ80ET90														
	GENERAL		UNIT												
	Shipping weight*	kg	1,681	930–992	955–1,015	1,402–1,602	1,595–1,822	1,582–2,060	2,469–3,161	3,530–4,446	3,817–4,609	4,617–5,454	4,817–5,630	7,588–8,877	8,348–9,625
	Operating weight	kg	1,797–2,152	1,029–1,089	1,052–1,112	1,529–1,720	1,724–1,950	1,725–2,203	2,571–3,262	3,720–4,636	4,032–4,824	4,847–5,685	5,052–5,890	7,918–9,208	8,710–9,988
	Max. ripping force**	kN according to ISO 6015	9.1	4.5	4.5	7.9	9.1	11.2	15.3	21.1	20.8	23.6	28	43.7	46
	Max. break out force	kN according to ISO 6015	20.5	8.9	8.9	15.3	18.7	18.8	22.5	35	43.3***	36.8***	46***	68	73.8
	DRIVE		UNIT												
	Manufacturer	–	DANA	Yanmar	Drive either with installed diesel engine (compare 803) or electric motor in HPU8 power unit	Yanmar	Yanmar	Yanmar	Yanmar	Yanmar	Perkins diesel engine			Perkins	
	Model	–	SRI150-21T48	3TNV70		3TNV76	3TNV76	3TNV76	3TNV76	3TNV88F-EPWN	403J-E17T	403J-E17T	403J-E17T	404J-E22T	904J-E28T
	Design system	–	Electric motor	Liquid-cooled, 3-cylinder diesel engine		Liquid-cooled, 3-cylinder diesel engine		Liquid-cooled, 3-cylinder diesel engine		3-cylinder Yanmar diesel engine	Liquid-cooled, 3-cylinder turbo engine			Liquid-cooled, 4-cylinder Yanmar turbo diesel engine	
	Displacement	cm³	–	854		1,116	1,116	1,116	1,116	1,642	1,662	1,662	1,662	2,216	2,799
	Drive output	according to ISO kW/hp	16.5	9.9/13.3		13.8/18.5	13.8/18.5	13.8/18.5	15.8/21.5	18.2/24.4	36/48.2	36/48.2	36/48.2	42/57.1	55.4/75.3
	Fuel tank volume	l	–	7		24	22	24	36	44	80	80	80	85	85
	Emission standard stage	–	–	Stage V		Stage V									
	HYDRAULICS		UNIT												
	Hydraulic system / pumps	–	Load-sensing hydraulic system/ 1 variable displacement pump	Summation regulation/ 2 gear pumps		LUDV with gear pump	Load-sensing hydraulics system / 1 variable displacement pump:	Summation regulation/ 2 variable displacement pumps, 2 gear pumps	Double variable pump, gear pump	2 axial piston pumps/ 2 gear pumps	Load Sensing Flow Sharing/ 1 axial piston pump			LUDV with variable displacement pump	
	Max. flow rate	l/min	39.6	10.7 + 10.7	10.7 + 10.7	34.5	39.6	23.8 + 23.8 + 19.1 + 6.5	30.5 + 30.5 + 20.2 + 7.2	42.5 + 42.5 23.8 + 11.3	90	126	132.3	160	175
	Operating pressure for work and travel hydraulics	bar	240	170	170	200	240	200	225	240	245	245	265	300	300
	Operating pressure for swing gear	bar	160	70	70	130	150	125	206	195	206	209	209	240	240
	Auxiliary hydraulics, max. discharge volume	l/min	5	22	22	34	36.1	41.5	52.2	66.1	74	73	75	113	113
	TRAVEL GEAR		UNIT												
	Ground clearance	mm	–	132	132	180	156	210	277	251	300	330	330	357	370
	Max. travel speed	km/h	4.8	1.8	1.8	4.1	4.8	5.3	3.8	2.7 / 4.7	4.8	4.8	4.4	4.4	5
	Ground pressure of basic machine	kg/cm²	–	0.25	0.25	0.26	0.28	0.30	0.27	0.36–0.46	0.3–0.38	0.27–0.31	0.28–0.34	0.36	0.40
	NOISE EMISSIONS		UNIT												
	Sound power level (L _{wa})	dBA acc. to 2000/14/EC	84	93	93	93	93	93	93	94	97	97	97	97	99
Sound pressure level (L _{pa})	dBA acc. to ISO 6394	70	77	77	79	79	75.8	79	78	79	79	79	79	79	

* Basic machine + 10% fuel tank capacity ** Short dipper stick *** dipper stick blade (ISO 6015), bolted on + HighPower backhoe

HPU8	MODEL	LENGTH	WIDTH	HEIGHT	WEIGHT	ENGINE	OUTPUT	VOLTAGE	CURRENT CONSUMPTION	HYDRAULIC PUMP DELIVERY RATE	OPERATING PRESSURE	HYDRAULIC OIL TANK CAPACITY	HYDRAULIC HOSE LENGTH
	HPU8	930 mm	720 mm	1,000 mm	192 kg including hydraulic oil	3-phase electric motor	7.5 kW	400 V	16 A	20 l/min	210 bar	9.6 l	12 m

All information relates to the base machine. Subject to changes.

The Wacker Neuson product range includes over 300 different product series with different versions. The product data may vary accordingly with the selection of different options. Not all Wacker Neuson products listed or shown here are however available or allowed in all countries. The Wacker Neuson products shown are examples and as such are subject to changes. We are happy to make you a specific offer upon request!

Reproduction only with the written approval of Wacker Neuson.

© Wacker Neuson SE



EQUIPCARE

Your excavators always within view: With EquipCare.

With our Telematics solution, EquipCare, you give your machines a voice. Machines equipped with the Telematics module actively report in, for example to inform you of upcoming maintenance or possible malfunctions. For these machines, our EquipCare Dual ID is also available as an option. This is an electronic access control. You can set exactly who can use your machines, and thus increase security on your construction site.

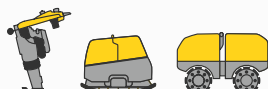
* Running time varies depending on the type of application

Your everyday work day is full of challenges. We have the right solutions and help you to stay ahead of the competition. We offer you everything you need for this purpose: **Wacker Neuson—all it takes!**

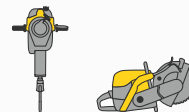
Products



Concrete technology



Compaction



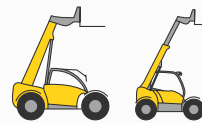
Demolition technology



Excavators



Wheel loaders



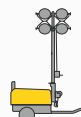
Telehandlers



Dumpers



Generators



Lighting



Pumps



Used equipment

www.wackerneuson.com

Services



Financial solutions
Uncomplicated, transparent and individual financing options for you.



Repair & maintenance
Excellent and fast maintenance. Repairs with original spare parts.



Academy
We expand your know-how: practice-oriented and within an ideal learning environment.



EquipCare
Everything about the machines at a glance, via app or PC – EquipCare.



Concrete specialists
Our specialists advise you in all project stages.



Spare parts

Every minute counts:
Within the shortest period of time, we deliver over 150,000 genuine Wacker Neuson spare parts to your construction site.



Facebook
wackerneuson



Instagram
@wackerneuson



Youtube
Wacker Neuson



LinkedIn
Wacker Neuson Group